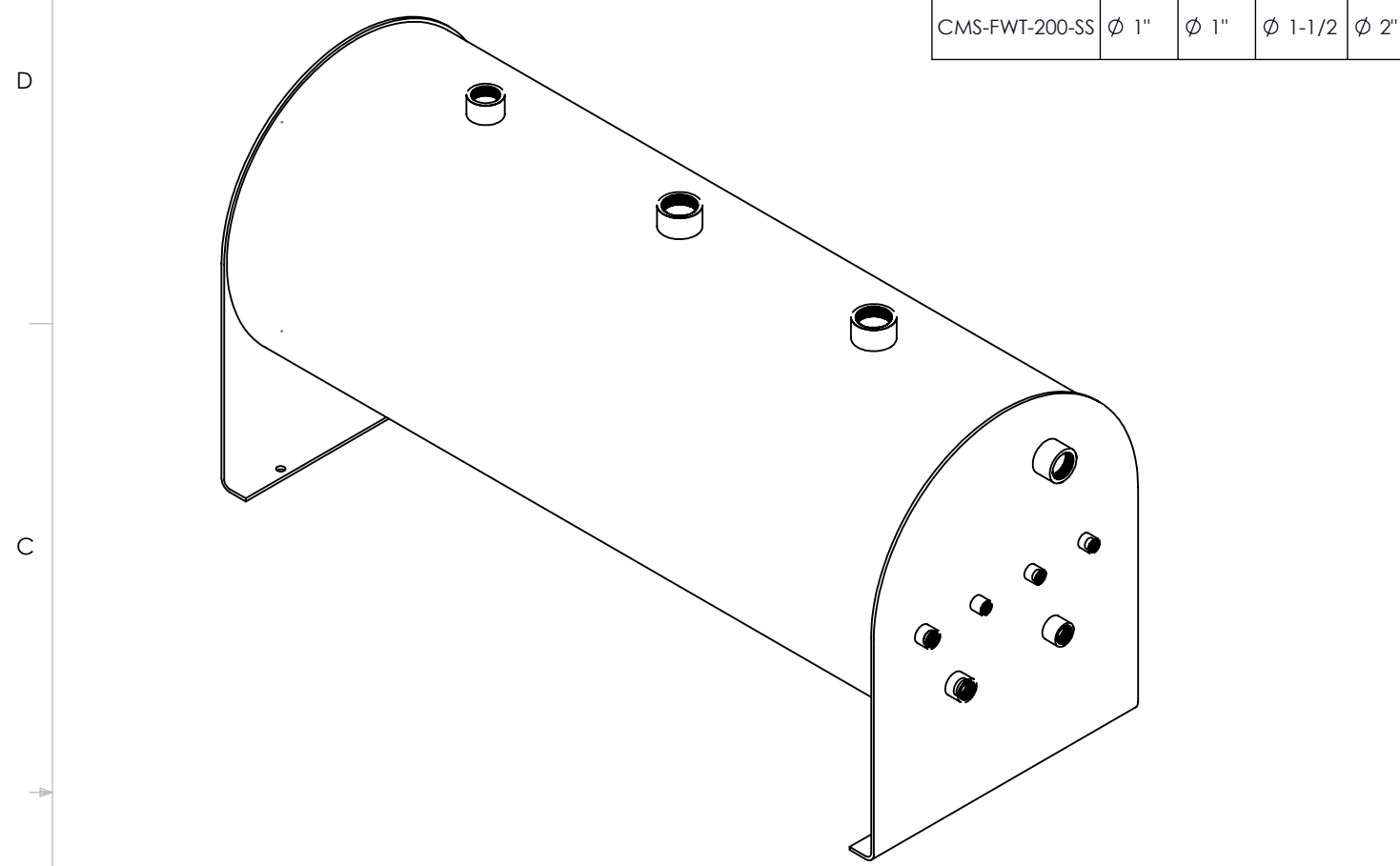


8 7 6 5 4 3 2 1

MODEL NO.	N1	N2	N3	N4	N5	N6	N7	N8	N9	N10	N11	N12	N13	N14	N15	N16	N17	Weight
CMS-FWT-100-SS	Ø 1"	Ø 1"	Ø 1-1/2"	Ø 2"	Ø 1/2"	Ø 1/2"	Ø 1/2"	Ø 2"	Ø 1-1/2"	Ø 3/4"	Ø 1/2"	Ø 1/2"	Ø 1-1/2"	Ø 1"	Ø 1/2"	Ø 2"	Ø 2"	355 lb
CMS-FWT-200-SS	Ø 1"	Ø 1"	Ø 1-1/2"	Ø 2"	Ø 1/2"	Ø 1/2"	Ø 1/2"	Ø 2"	Ø 1-1/2"	Ø 3/4"	Ø 1/2"	Ø 1/2"	Ø 1-1/2"	Ø 1"	Ø 1/2"	Ø 2"	Ø 2"	620 lb

NOTES:
 -RECOMMENDED PRACTICE:
 CONDUCTIVITY PROBE ON
 RECIRC LINE
 -CMS RESERVES THE RIGHT TO
 ALTER THIS DESIGN



Dimension Table		
Dim.	CMS-FWT-100-SS	CMS-FWT-200-SS
ØA	24"	30"
B	62-5/8"	67-5/8"
C	31-1/2"	41-1/4"
D	12-1/4"	15-1/4"
E	30-1/4"	32-3/4"
F	48-1/4"	50-1/4"
G	39-1/4"	42-1/4"
H	21-1/4"	24-1/4"
I	4-1/4"	7"
J	10-3/4"	15"
K	4-1/2"	7"
FRAME HEIGHT	60-1/4"	60-1/4"

Nozzle Connections Table		
Conn.	Type	Description
N1	NPT SS	STEAM INLET
N2	NPT SS	CONDENSATE INLET
N3	NPT SS	MAKEUP INLET/OVERFLOW
N4	NPT SS	CONDENSATE RETURN
N5	NPT SS	RECIRC LINE
N6	NPT SS	CHEMICAL INJECTION
N7	NPT SS	RTD
N8	NPT SS	VENT
N9	NPT SS	LEVEL CONTROL
N10	NPT SS	TEMP GAUGE
N11	NPT SS	SIGHT GLASS
N12	NPT SS	SIGHT GLASS
N13	NPT SS	MAKEUP INLET/OVERFLOW
N14	NPT SS	DRAIN
N15	NPT SS	DPT BOTTOM/SPARE
N16	NPT SS	FEEDWATER OUT
N17	NPT SS	FEEDWATER OUT

2	ADDED 1000, 1500 SIZES	08/05/20	SD
1	REVISED CONNECTIONS	23/10/19	SD
REV. NO.:	DESCRIPTION:	DATE:	BY:

ENGINEER:
 PROJECT:
 CLIENT/CUSTOMER:

PAGE DESCRIPTION:
CMS FEEDWATER TANK MODELS

MODEL #:
 CMS-FWT-100-SS, CMS-FWT-200-SS, CMS-FWT-300-SS
 CMS-FWT-500-SS, CMS-FWT-750-SS,
 CMS-FWT-1000-SS, CMS-FWT-1500-SS

WORK ORDER #:
 -

SCALE: 1:16 DWG SIZE: B SHEET: 1 OF 2

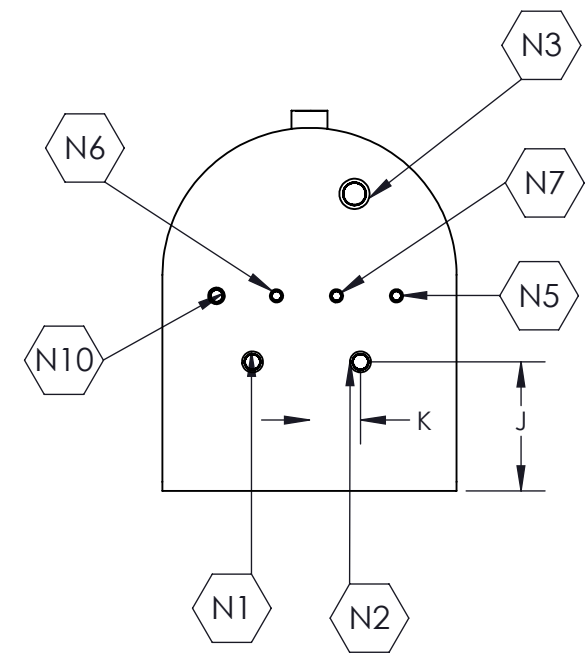
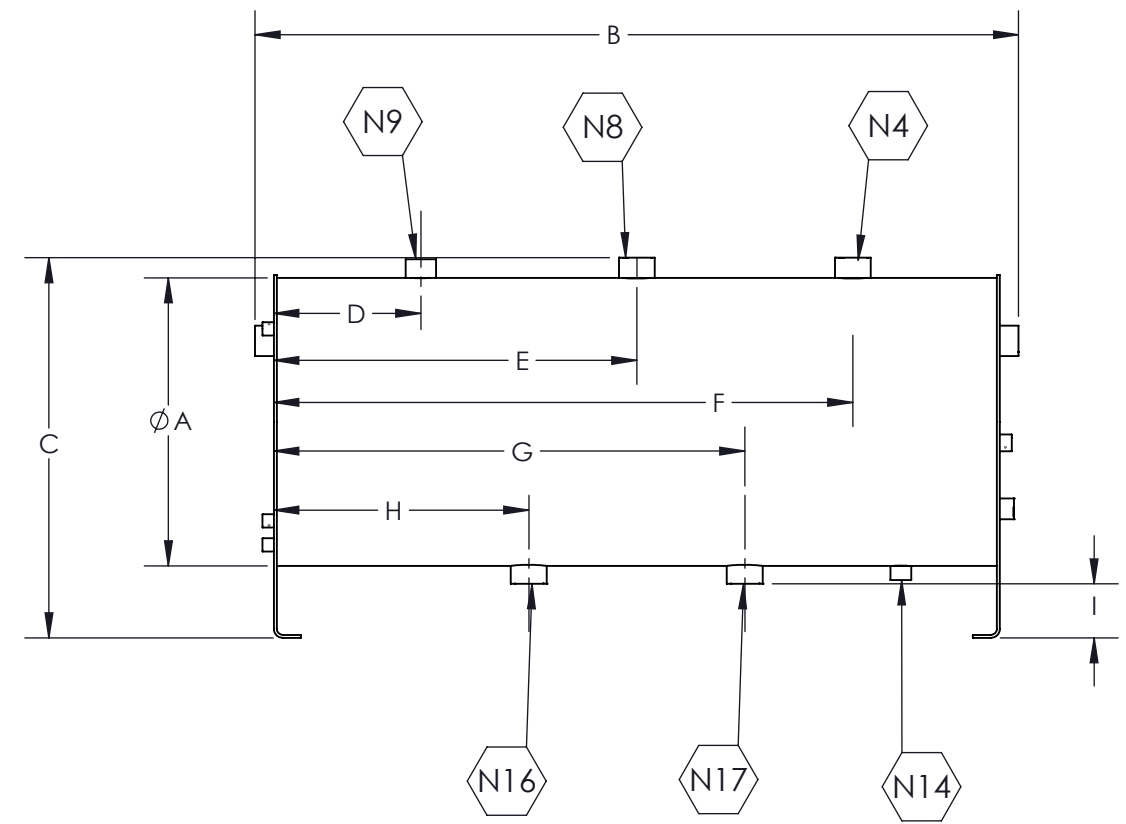
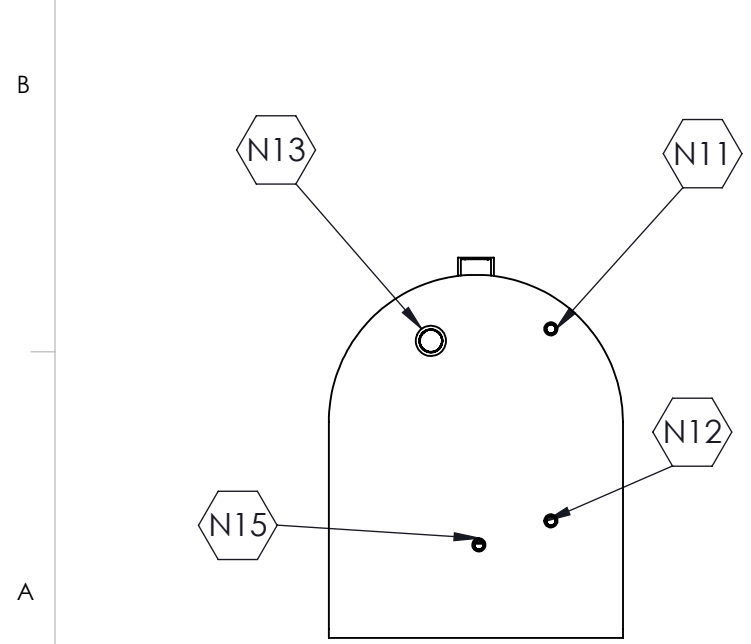
DRAWN BY: STEVEN DONDRS DATE: 21/10/19
 APPROVED BY: PK DATE: 23/10/19



CMS INCORP
 ESTIMATED DRY WEIGHT:
 - LBS

PROPRIETARY AND CONFIDENTIAL
 THIS DOCUMENT CONTAINS PRIVILEGED AND
 CONFIDENTIAL PROPERTY OF CUSTOM
 MANUFACTURED SYSTEMS INC. ANY
 DISCLOSURE OR REPRODUCTION IN PART
 OR AS A WHOLE WITHOUT THE WRITTEN
 PERMISSION OF CUSTOM MANUFACTURED
 SYSTEMS INC. IS PROHIBITED.

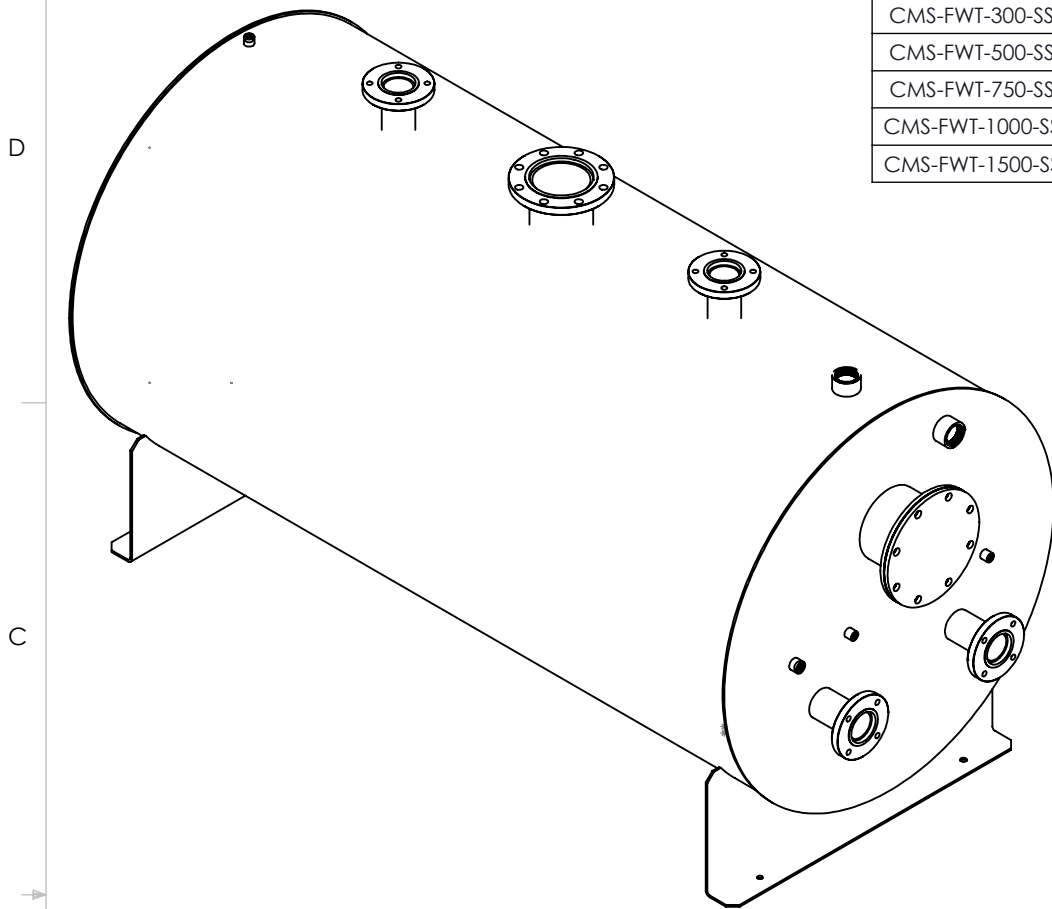
DRAWING #: 235-C001 REV #: 02



8 7 6 5 4 3 2 1

MODEL NO.	N1	N2	N3	N4	N5	N6	N7	N8	N9	N10	N11	N12	N13	N14	N15	N16	N17	N18	N19	N20	N21	N22	Weight
CMS-FWT-300-SS	3"	3"	2"	2"	1"	1/2"	1/2"	4"	2"	3/4"	1/2"	1/2"	2"	1"	1/2"	2"	2"	2"	1/2"	2"	8"	1/2"	765 lb
CMS-FWT-500-SS	3"	3"	2"	2"	1"	1/2"	1/2"	4"	2"	3/4"	1/2"	1/2"	2"	1"	1/2"	2"	2"	2"	1/2"	2"	8"	1/2"	1001 lb
CMS-FWT-750-SS	3"	3"	2"	3"	1"	1/2"	1/2"	6"	2"	3/4"	1/2"	1/2"	2"	1"	1/2"	2-1/2"	2-1/2"	2-1/2"	1/2"	3"	8"	1/2"	1430 lb
CMS-FWT-1000-SS	3"	3"	2"	3"	1"	1/2"	1/2"	6"	2"	3/4"	1/2"	1/2"	2"	1"	1/2"	2-1/2"	2-1/2"	2-1/2"	1/2"	3"	8"	1/2"	1805 LB
CMS-FWT-1500-SS	3"	3"	2"	4"	1"	1/2"	1/2"	8"	2"	3/4"	1/2"	1/2"	2"	1"	1/2"	3"	3"	3"	1/2"	4"	8"	1/2"	2530 LB

NOTES:
-RECOMMENDED PRACTICE:
CONDUCTIVITY PROBE ON
RECIRC LINE
-CMS RESERVES THE RIGHT TO
ALTER THIS DESIGN



Dimension Table					
Dim.	CMS-FWT-300-SS	CMS-FWT-500-SS	CMS-FWT-750-SS	CMS-FWT-1000-SS	CMS-FWT-1500-SS
ØA	36"	42"	48"	54"	54"
B	78"	92-1/4"	104-3/4"	108-3/4"	168-3/4"
C	50"	54"	60"	69"	69"
D	16"	24"	24-1/4"	24-1/4"	36-1/4"
E	36"	42"	48-1/4"	50-1/4"	80-1/4"
F	56"	60"	72-1/4"	76-1/4"	124-1/4"
G	54"	62"	72-1/4"	76-1/4"	124-1/4"
H	36"	42"	48-1/4"	50-1/4"	80-1/4"
I	17-3/4"	21-3/4"	24-1/4"	24-1/4"	36-1/4"
J	1"	1"	1"	3"	3"
K	14-1/8"	17"	20"	25-1/4"	25-1/4"
L	6"	8"	10"	10"	10"
FRAME HEIGHT	54"	54"	54"	54"	54"

NOZZLE CONNECTION TABLE		
Conn.	Type	Description
N1	ANSI #150 FLANGED-SS	Steam inlet
N2	ANSI #150 FLANGED-SS	Condensate inlet
N3	NPT - SS	Overflow
N4	ANSI #150 FLANGED-SS	Condensate return
N5	NPT - SS	Recirc line
N6	NPT - SS	Chemical injection
N7	NPT - SS	RTD
N8	ANSI #150 FLANGED-SS	Vent
N9	NPT - SS	Level control/Spare
N10	NPT - SS	Temperature gauge
N11	NPT - SS	Sight Glass
N12	NPT - SS	Sight Glass
N13	NPT - SS	Overflow
N14	NPT - SS	Drain
N15	NPT - SS	DPT bottom connection
N16	ANSI #150 FLANGED-SS	Feedwater out
N17	ANSI #150 FLANGED-SS	Feedwater out
N18	ANSI #150 FLANGED-SS	Feedwater out
N19	NPT - SS	Makeup inlet
N20	BOLTED COVER- SS	Inspection
N21	ANSI #150 FLANGED-SS	Condensate return
N22	NPT - SS	Spare

REV. NO. 1
DESCRIPTION:
DATE: 23/10/19
BY: SD

ENGINEER:
PROJECT:
CLIENT/CUSTOMER:
PAGE DESCRIPTION:
CMS FEEDWATER TANK MODELS

MODEL #:
CMS-FWT-100-SS, CMS-FWT-200-SS, CMS-FWT-300-SS
CMS-FWT-500-SS, CMS-FWT-750-SS,
CMS-FWT-1000-SS, CMS-FWT-1500-SS

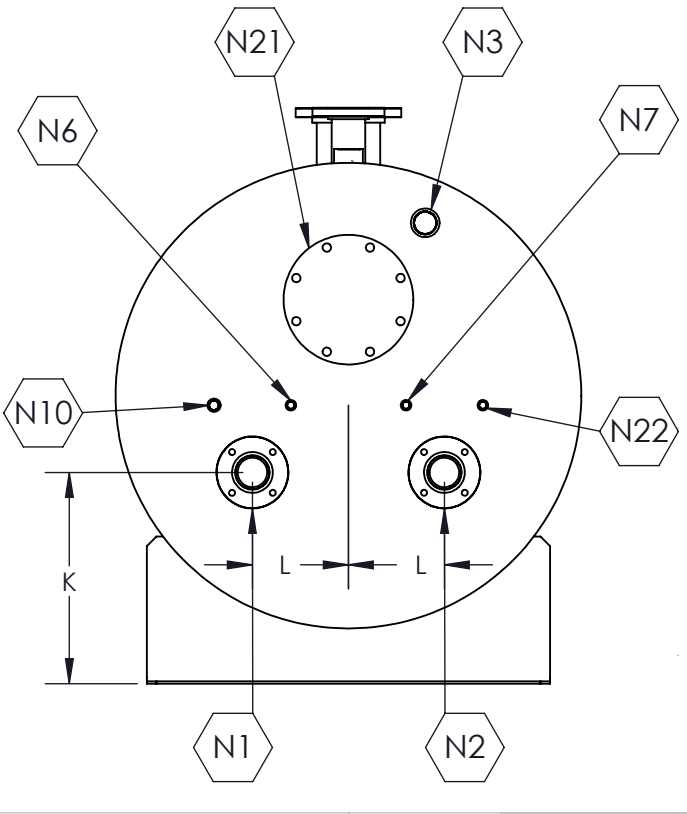
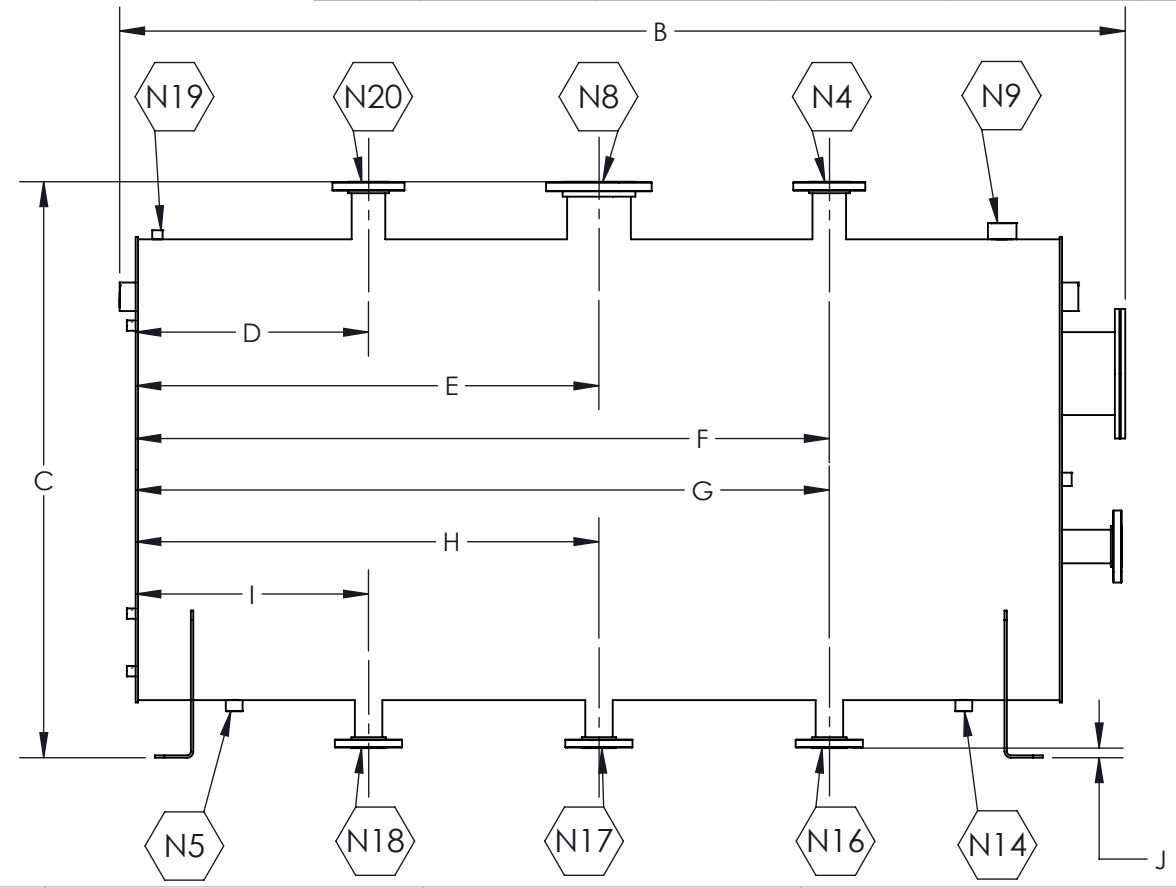
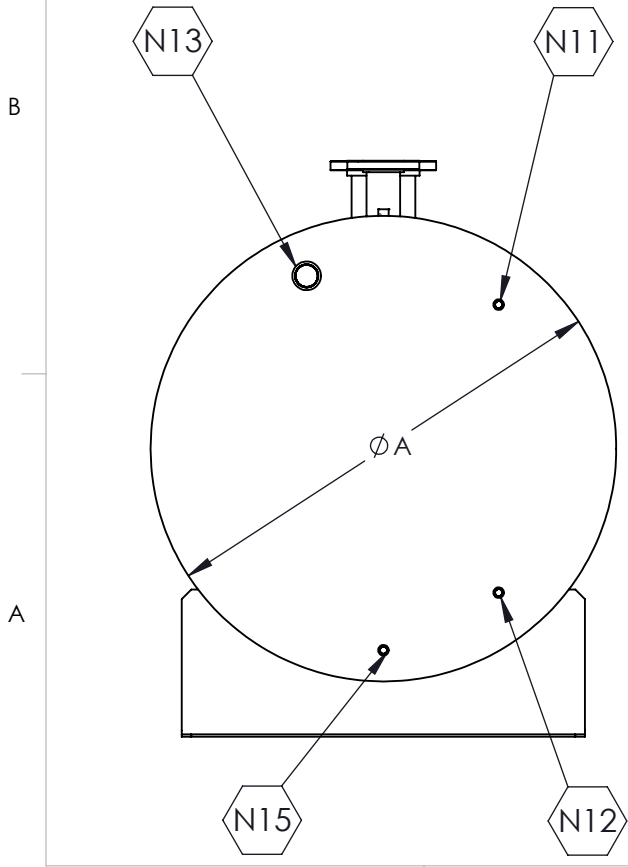
WORK ORDER #:
SCALE: 1:20 DWG SIZE: B SHEET: 2 OF 2

DRAWN BY: STEVEN DONDRS DATE: 21/10/19
APPROVED BY: PK DATE: 23/10/19

CMS INCORP
ESTIMATED DRY WEIGHT:
- LBS

PROPRIETARY AND CONFIDENTIAL
THIS DOCUMENT CONTAINS PRIVILEGED AND
CONFIDENTIAL PROPERTY OF CUSTOM
MANUFACTURED SYSTEMS INC. ANY
DISCLOSURE OR REPRODUCTION IN PART
OR AS A WHOLE WITHOUT THE WRITTEN
PERMISSION OF CUSTOM MANUFACTURED
SYSTEMS INC. IS PROHIBITED.

DRAWING #: 235-C001 REV #: 1



ESTIMATED DRY WEIGHT:
- LBS

PROPRIETARY AND CONFIDENTIAL
THIS DOCUMENT CONTAINS PRIVILEGED AND
CONFIDENTIAL PROPERTY OF CUSTOM
MANUFACTURED SYSTEMS INC. ANY
DISCLOSURE OR REPRODUCTION IN PART
OR AS A WHOLE WITHOUT THE WRITTEN
PERMISSION OF CUSTOM MANUFACTURED
SYSTEMS INC. IS PROHIBITED.

DRAWING #: 235-C001 REV #: 1