

8

7

6

5

4

3

2

1

D

D

C

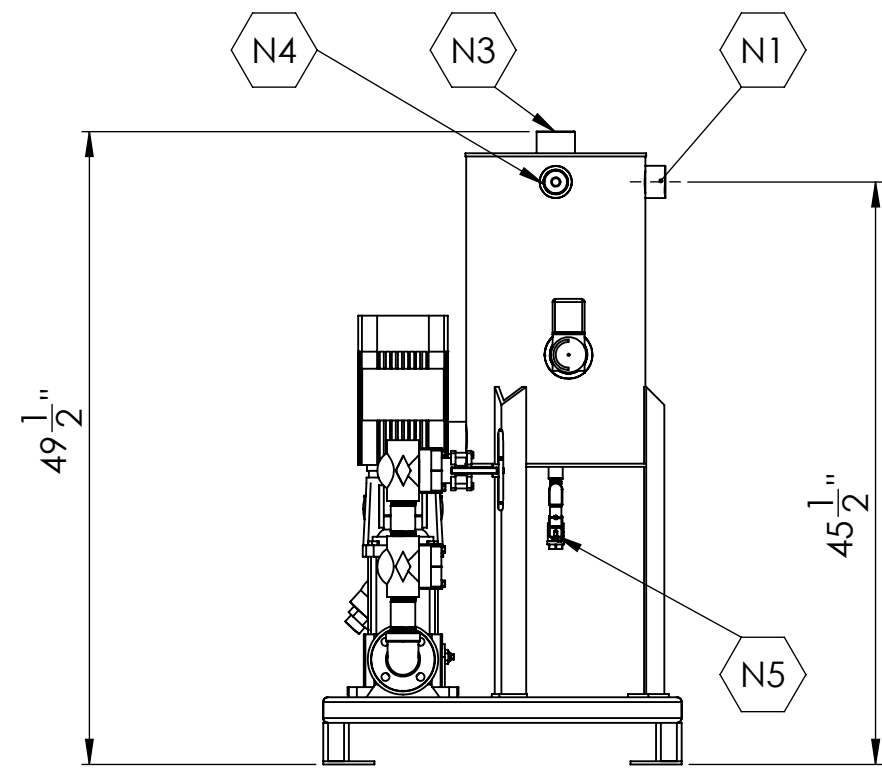
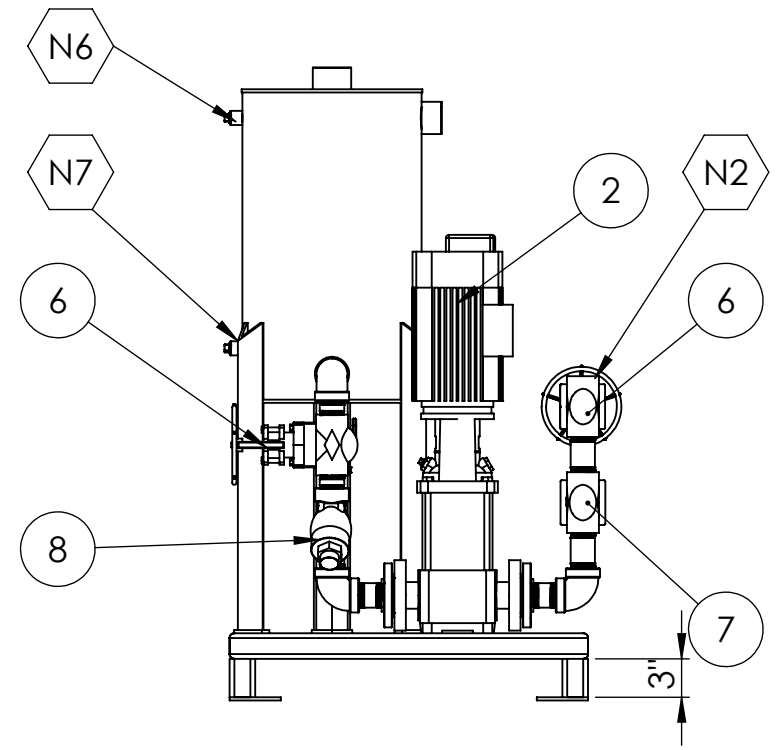
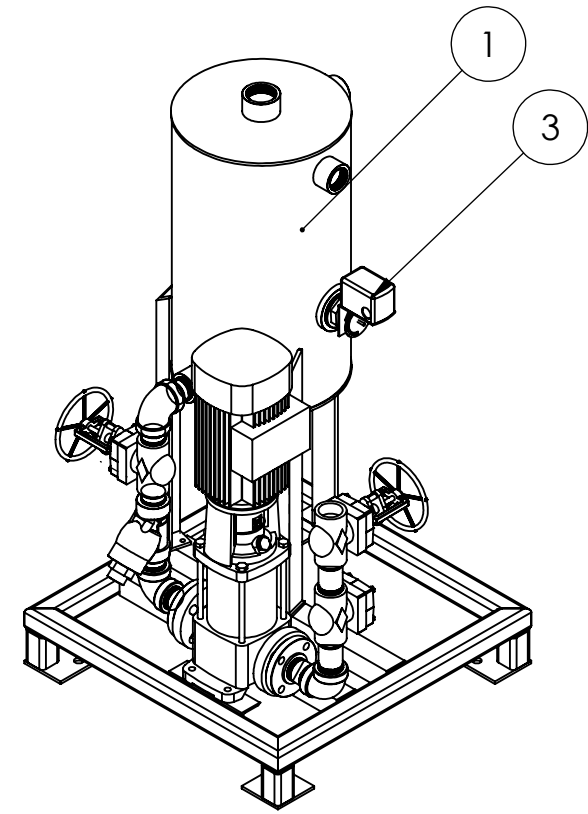
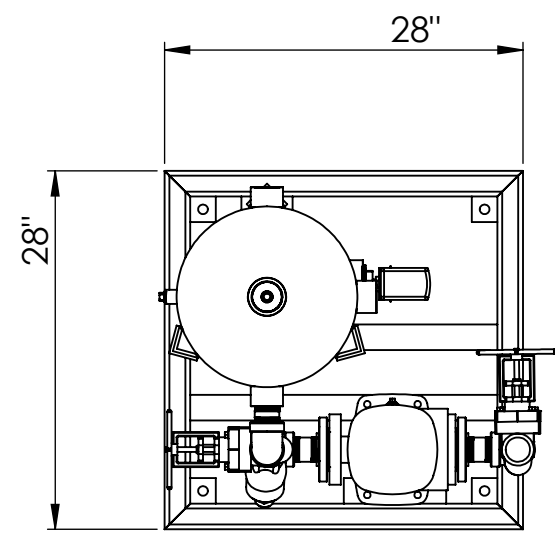
C

B

B

A

A



ITEM NO.	SIZE	ID	MATERIAL	QTY.
1	Ø 14" 16 GALLON	VENTED CONDENSATE TANK	304 SS	1
2	Ø 1-1/2" FGJ FLANGE	GRUNDFOS CR 5-7	CAST BODY	1
3	Ø 1/2"	PUMPTROL FLOAT SWITCH	304 SS FLOAT	1
4	Ø 1-1/2" SCH 80	CONDENSATE OUT PIPING	CS	1
5	2" TUBE	SKID FRAME	CS	1
6	Ø 1-1/2" # 800	NPT CSSI GATE VALVE	CS	2
7	Ø 1-1/2" # 800	NPT CSSI CHECK VALVE	CS	1
8	Ø 1-1/2" # 600	NPT MUELLER STRAINER	CS	1
9	Ø 1/2" 800 CL	NPT BALL VALVE	304SS	1
10	MISC SIZES	PLUGS AND FLOAT SWITCH ADAPTOR	304SS	1

NOTES:

REV. NO.	DESCRIPTION:	DATE:	BY:
-	-	-	-
-	-	-	-
-	-	-	-
-	-	-	-

Nozzle Connection Table

Conn.	Size	Type	Description
N1	Ø 1-1/2"	NPT - 304 SS	Condensate Inlet
N2	Ø 1-1/2"	NPT - Carbon steel	Condensate Outlet
N3	Ø 2"	NPT - 304 SS	Vent
N4	Ø 1-1/2"	NPT - 304 SS	Overflow
N5	Ø 1/2"	NPT - 304 SS	Drain
N6	Ø 1/2"	NPT - 304 SS	Sight Glass (plugged)
N7	Ø 1/2"	NPT - 304 SS	Sight Glass (plugged)

Design and Operating Conditions

Service Fluid	Pressure	Temperature	Flow Rate
Condensate			
Design	Vented	N/A	Dependant on Inlet Pressure
Operating Inlet	-	-	-
Operating Outlet	20 PSIG	212°F	12 USGPM

Vessel Details

Volume of Vessel	15.15 USGAL
Volume to Overflow	13.89 USGAL
Vessel Dry Weight	104.77 LB
Vessel Flooded Weight	220.65 LB
Skid Flooded Weight	387.01 LB

Electrical Data

	Supply Voltage	Control Signal	Horsepower
Control Panel	N/A	N/A	N/A
Pump	120 V	Dry Contact	0.5 HP
FLA	9.8 A		

Material Spec

Condensate Piping	Carbon steel Sch. 80
Frame	Carbon steel tube
Vessel	304 SS

ENGINEER:

PROJECT:  
**CUSTOM STEAM ELECTRIC CONDENSATE PUMP PACKAGES**

CLIENT/CUSTOMER:  
-

PAGE DESCRIPTION:  
**15 GALLON CONDENSATE PUMP**

MODEL #:  
**CND-SPX-304-120**

WORK ORDER #:  
-

SCALE: 1:15 DWG SIZE: **B** SHEET: 1 OF 1

DRAWN BY: KEENAN KELLY DATE: 10/08/20

APPROVED BY: - DATE: -



**ESTIMATED DRY WEIGHT: 271.13 - LBS**

**PROPRIETARY AND CONFIDENTIAL**

THIS DOCUMENT CONTAINS PRIVILEGED AND CONFIDENTIAL PROPERTY OF CUSTOM STEAM SOLUTIONS INC. ANY DISCLOSURE OR REPRODUCTION IN PART OR AS A WHOLE WITHOUT THE WRITTEN PERMISSION OF CUSTOM STEAM SOLUTIONS INC. IS PROHIBITED.

DRAWING #: **179-C007** REV #: **0**