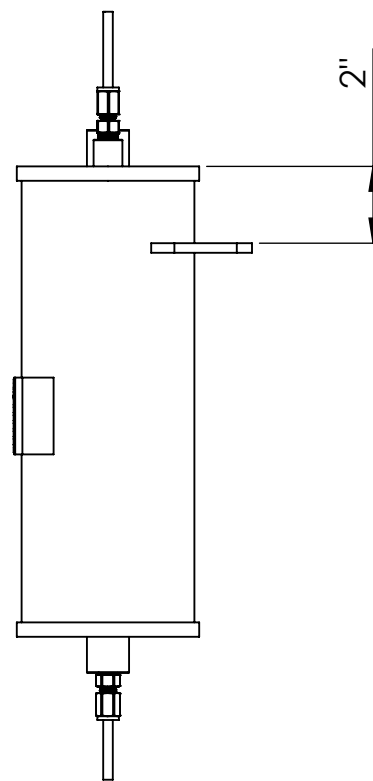
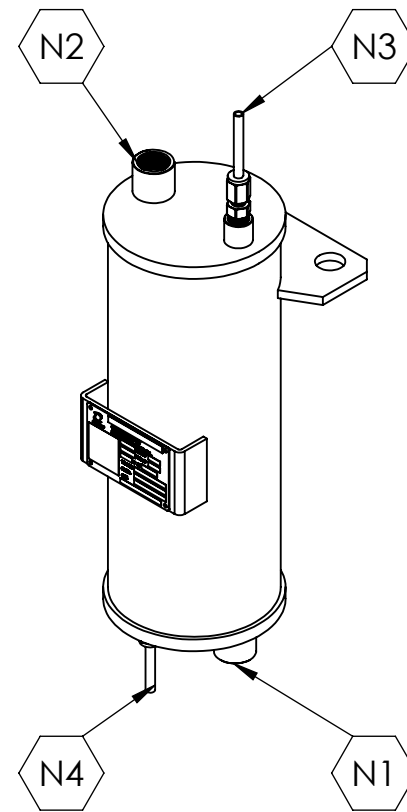
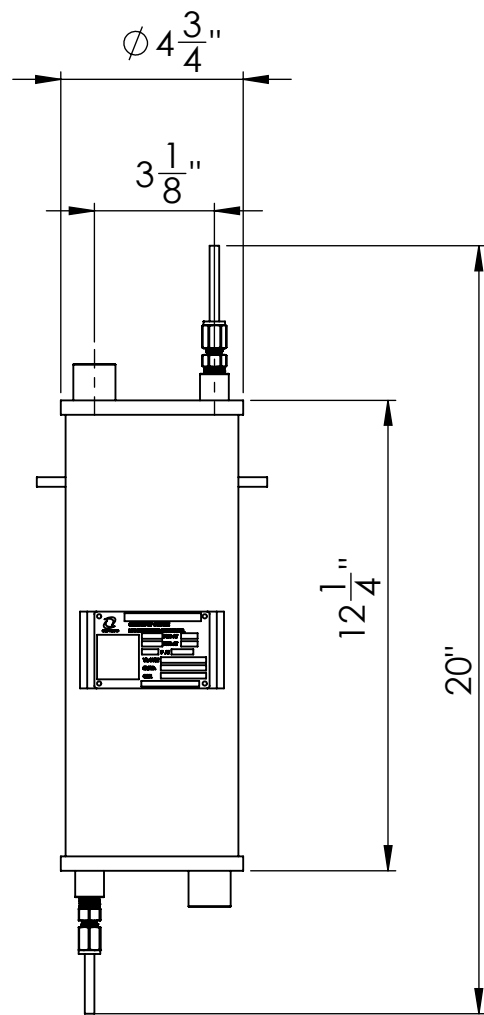
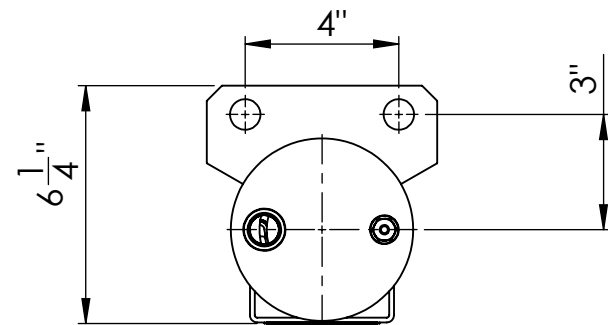
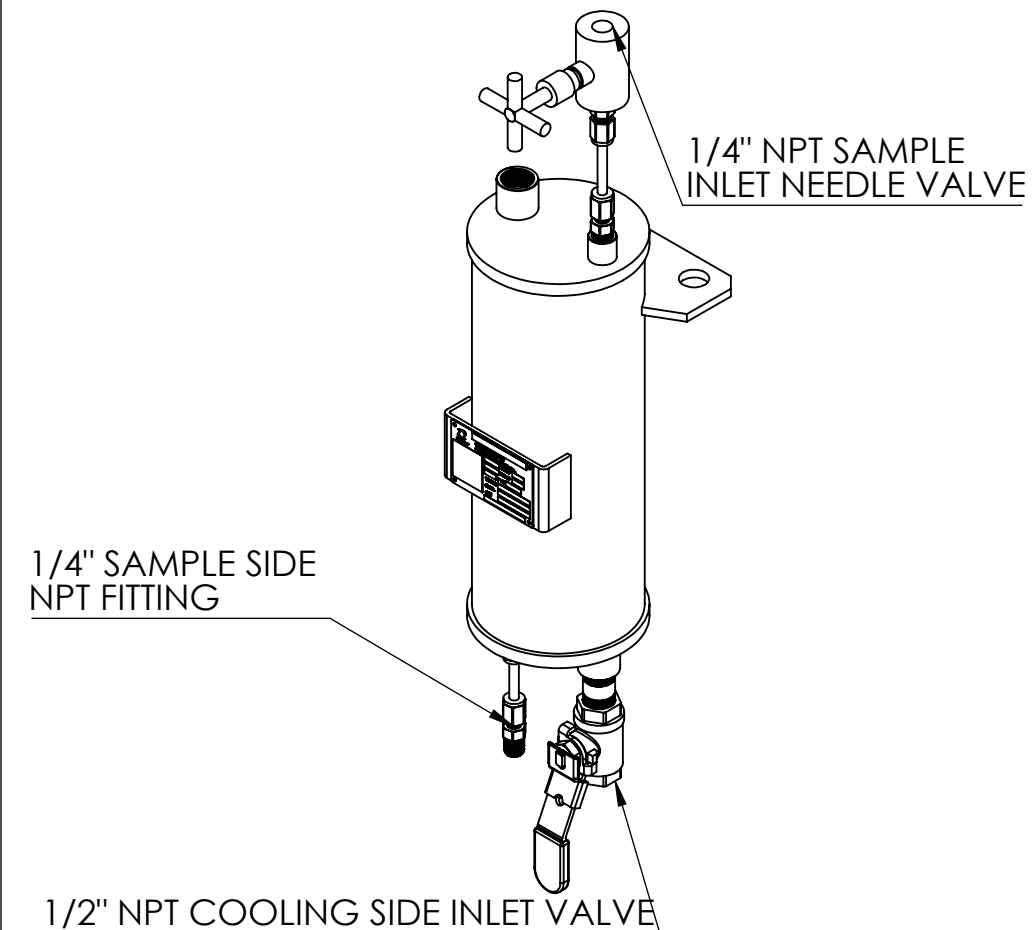
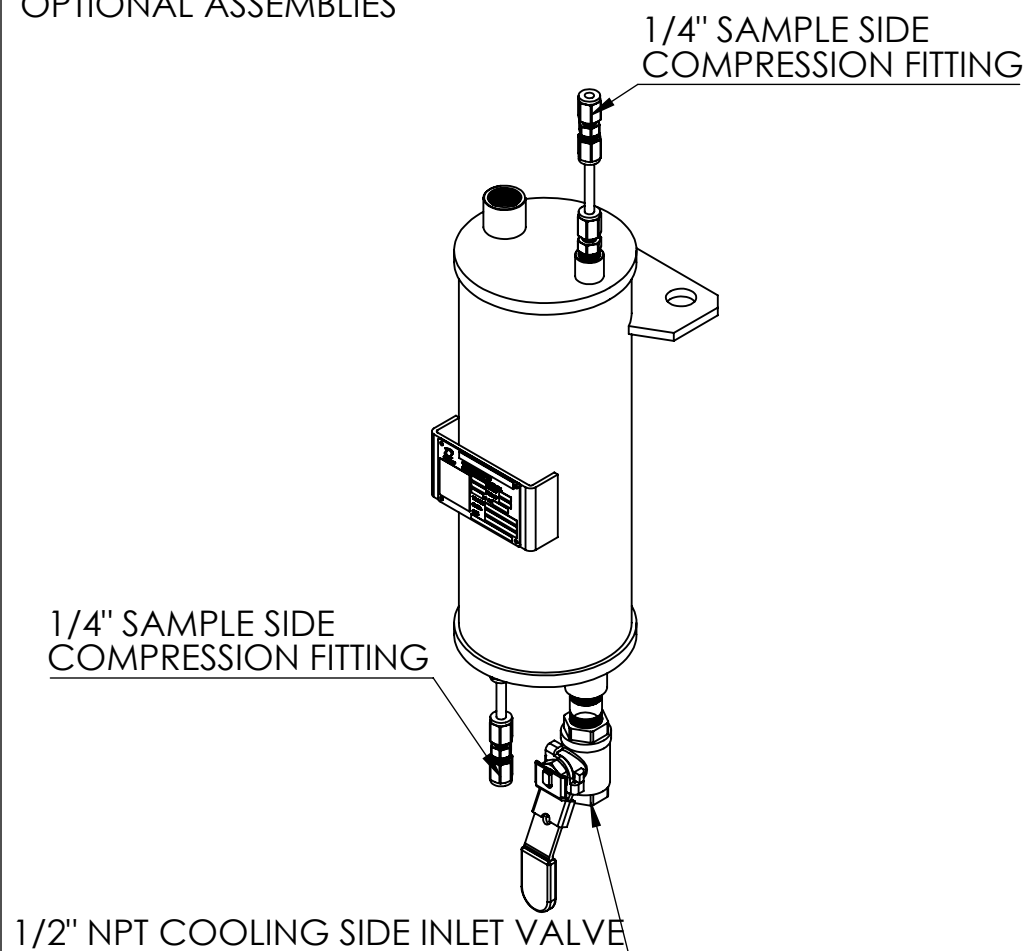


Nozzel Connection Table			
Conn.	Size	Type	Description
N1	ø 1/2"	NPT - 316 SS	Cooling Water Inlet
N2	ø 1/2"	NPT - 316 SS	Cooling Water Outlet
N3	ø _{OD} 1/4"	Bare Tube -316 SS	Sample Inlet
N4	ø _{OD} 1/4"	Bare Tube -316 SS	Sample Outlet



OPTIONAL ASSEMBLIES



NOTES:
 *SUPPLIED WITH CRN: 200 PSIG @ 450 F
 *MAX SAMPLE TEMPERATURE AT UNRESTRICTED FLOW: 375 °F
 *FOR SAMPLE TEMPERATURES ABOVE 375 °F REFERENCE CSSI SAMPLE COOLER FLOW VS TEMPERATURE CHARTS.
 *FOR NON STEAM SAMPLES FLOW DIRECTIONS CAN BE REVERSED.
 * MOC 316 SS

-	-	-	-
-	-	-	-
-	-	-	-
-	-	-	-
-	-	-	-

REV. NO: DESCRIPTION: DATE: BY:

ENGINEER:

PROJECT:
 CSSI STANDARD SAMPLE COOLERS

CLIENT/CUSTOMER:
 STOCK ITEM

PAGE DESCRIPTION:
 CSSI STANDARD SAMPLE COOLER CUT SHEET

MODEL #:
 SC132-316SS

WORK ORDER #:
 -

SCALE: 1:5 DWG SIZE: B SHEET: 1 OF 1

DRAWN BY: KEENAN KELLY DATE: 24/11/20
 APPROVED BY: MB DATE: 24/11/20
 CHECKED BY: KM DATE: 24/11/20



Custom Steam Solutions Inc
 Your Steam System Integrators

ESTIMATED DRY WEIGHT:
 16.27 - LBS

PROPRIETARY AND CONFIDENTIAL
 THIS DOCUMENT CONTAINS PRIVILEGED AND CONFIDENTIAL PROPERTY OF CUSTOM STEAM SOLUTIONS INC. ANY DISCLOSURE OR REPRODUCTION IN PART OR AS A WHOLE WITHOUT THE WRITTEN PERMISSION OF CUSTOM STEAM SOLUTIONS INC. IS PROHIBITED.

DRAWING #: 193-C007 REV #: -